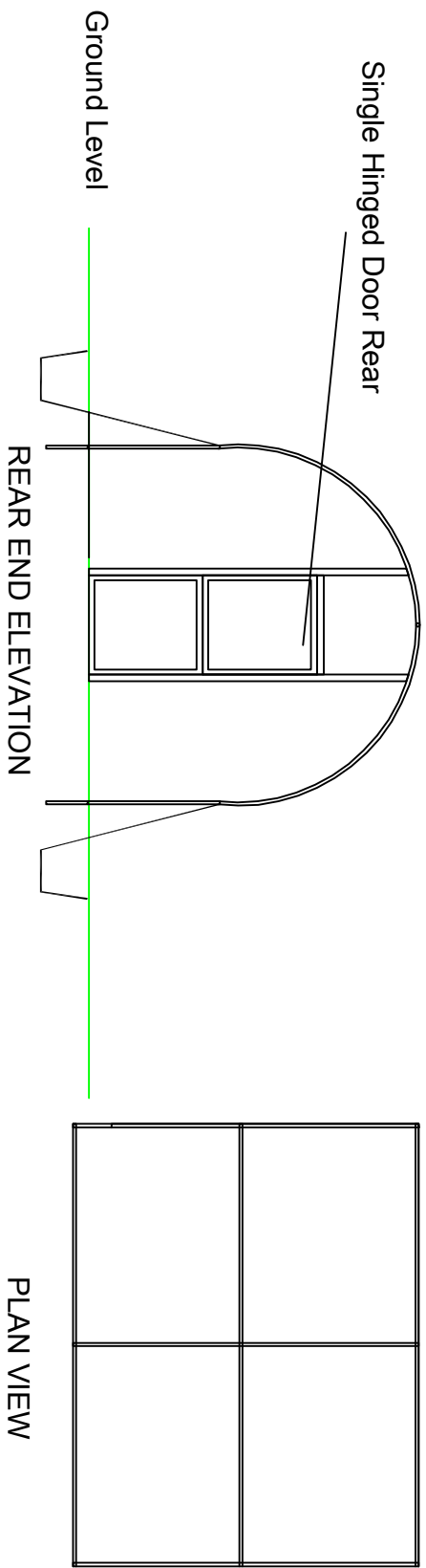
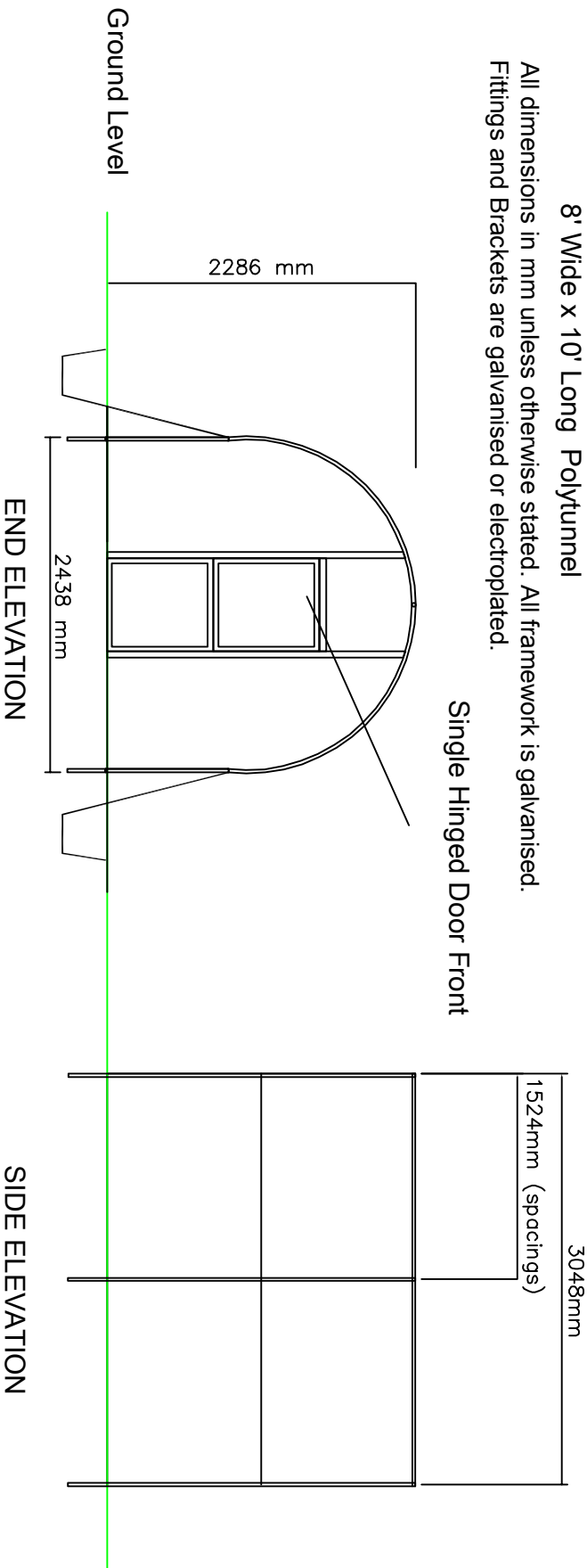


**APPENDIX 3 - PROPOSED POLYTUNNEL FOR STOATS HALL FISH FARM**

**Covered with Luminance THB.**

**8' Wide x 10' Long Polytunnel**

All dimensions in mm unless otherwise stated. All framework is galvanised. Fittings and Brackets are galvanised or electroplated.



Revisions - (A) 14th Aug 2102 - Scaled drawing in response to planning office letter request.

**DRAWN BY**  
M. J. Hart, 52 South Road  
Bretherton, Leyland, PR26 9AB  
Tel 01772 600 404

<b>DATE</b> 14th August 2012	<b>SCALE</b> 1/50	<b>DESIGNED BY</b> M.J.H	<b>CHECKED BY</b> M.J.H	<b>APPROVED BY</b> M.J.H
<b>PROJECT NO</b> 14th August 2012	<b>PROJECT NAME</b> Polytunnel	<b>DATE CHECKED</b> 14th August 2012	<b>DATE APPROVED</b> 14th August 2012	<b>DATE FOR ISSUE</b> 14th August 2012

**DRAWING No.** A4/PR26/2012/001/08/A

**Planning Application by**  
**Mr F Mitchell**  
Stoat Hall farm  
Back Lane  
Bretherton  
Leyland  
PR26 9BE

**Planning Application - For Two Bay Stable with Hay Store and Tack Room, Wind Generator and Polytunnel.**

This document was created with Win2PDF available at <http://www.win2pdf.com>.  
The unregistered version of Win2PDF is for evaluation or non-commercial use only.  
This page will not be added after purchasing Win2PDF.